

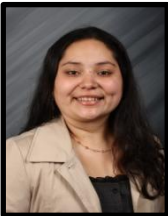
## 4TH Annual AAHHE Conference 2009 \*Graduate Fellows (Enrolled in Master's/Doctoral Program)



**Karla Cantu,**  
M.A., College of Education and  
Human Development  
University of Texas at San  
Antonio



**Tracy L. Najera,**  
Ph.D., Education  
University of Texas - Austin



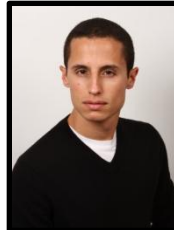
**Saskias Casanova,**  
Ph.D., Educational Psychology  
Stanford



**David Pérez II, \*(Co-Chair)**  
Ph.D., Education Policy Studies  
Pennsylvania State University



**Ivan Ceballos,**  
M.Ed., Education Policy Studies  
Pennsylvania State University



**Samuel G. Prieto,**  
Ph.D., Sociology  
University of California - Santa  
Barbara



**Karina Cuamea,**  
Ph.D., Education  
University of California, Irvine



**Sandra Quiñones,**  
Ph.D., School of Education  
University of Rochester



**Brianne A. Dávila, \*(Chair)**  
Ph.D., Sociology  
University of California, Santa  
Barbara



**Jessica J. Ranero,**  
Ph.D., Educational Leadership  
and Policy Studies  
Iowa State University



**Jesse Diaz,**  
Ph.D., Sociology  
University of California, Riverside



**Joyce Roys,**  
Ph.D., Education  
University of California, Irvine



**San Juanita Garcia,**  
Ph.D., Sociology  
Texas A & M



**Leonard A. Savala,**  
Ph.D., Department of  
Educational Leadership,  
Research, and Technology/  
Higher Education Leadership  
Western Michigan University



**Monique Mendoza,**  
Ph.D., Educational, School, and  
Counseling Psychology  
University of Missouri - Columbia